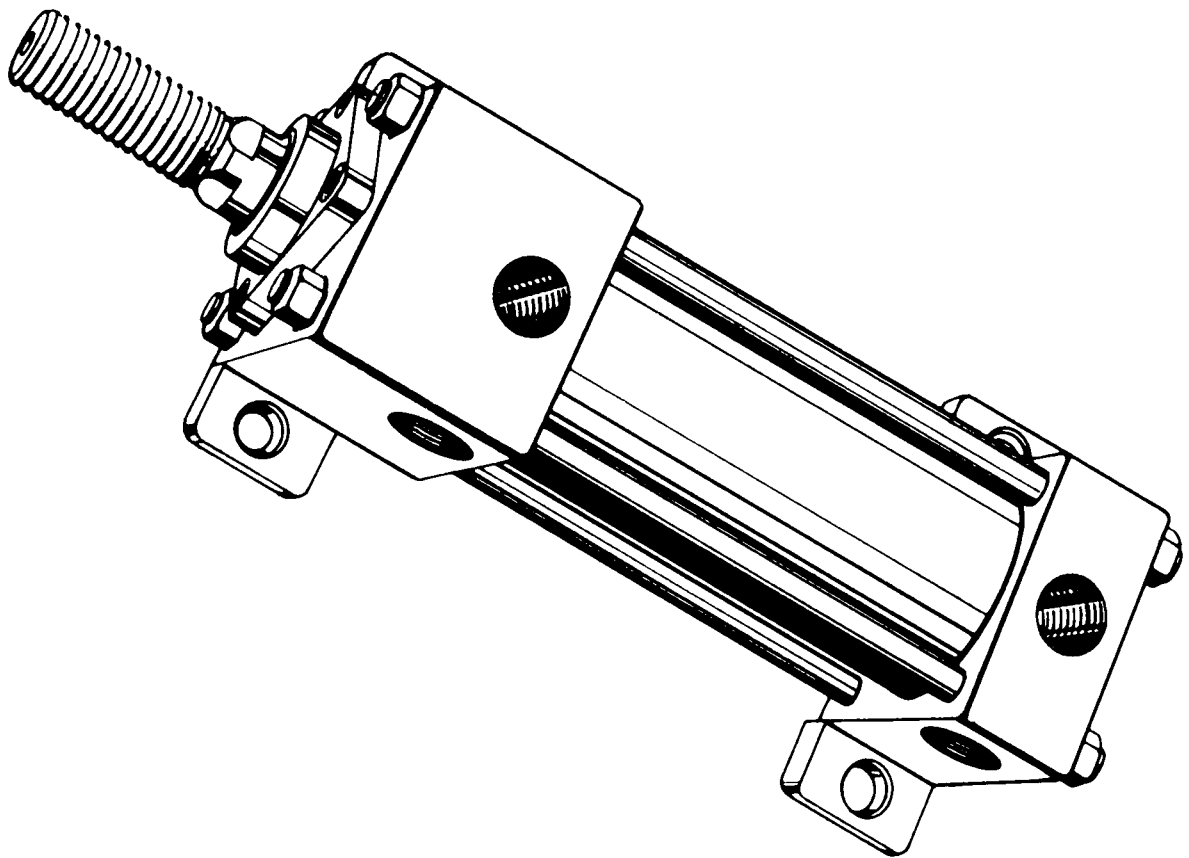


WGBenjey *Cylinders*

Formerly DE-STA-CO Cylinders

**NC-5 AIR and HD-1 HYDRAULIC
AUTOMOTIVE HEAVY-DUTY CYLINDERS**



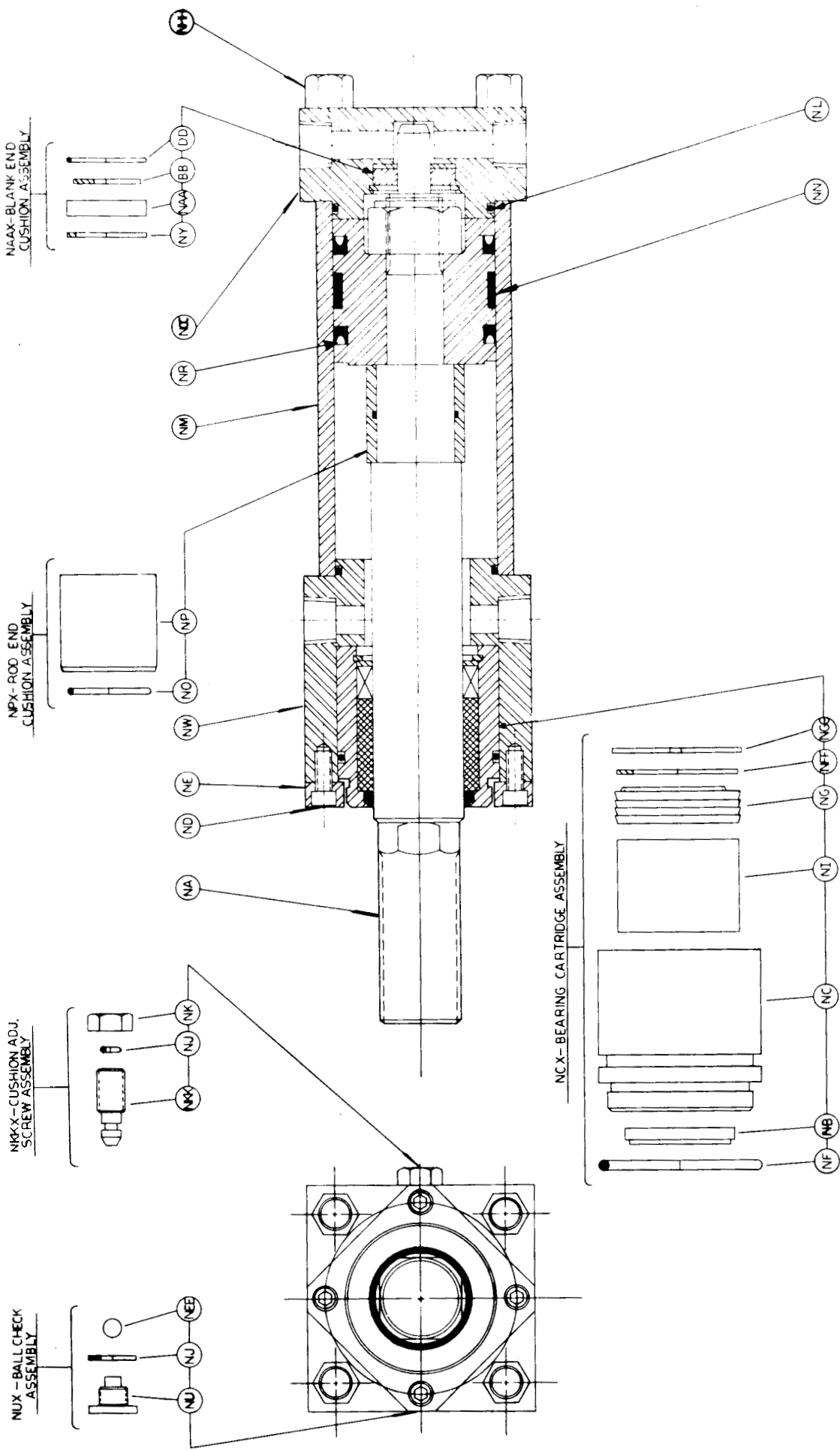
WGBenjey *Cylinders*

Formerly DE-STA-CO Cylinders

2293 Werth Road, Alpena, MI 49707

Phone: 800-942-2957 (WGB-CYLS) Fax: 866-942-3297 (WGB-FAXS)

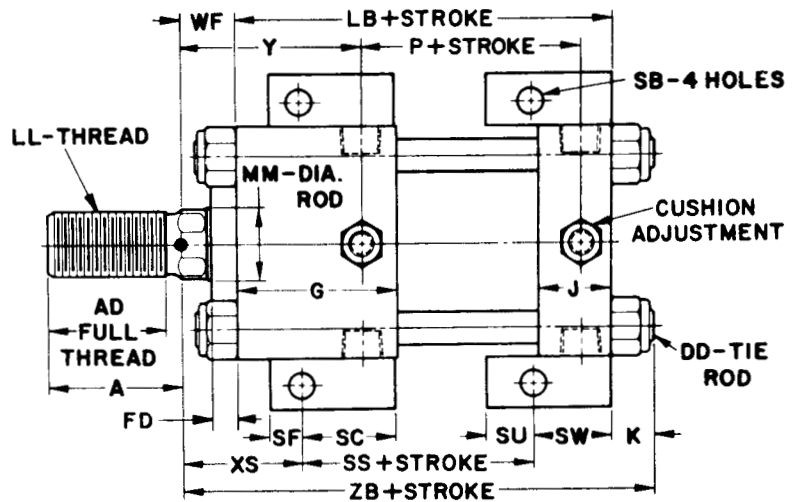
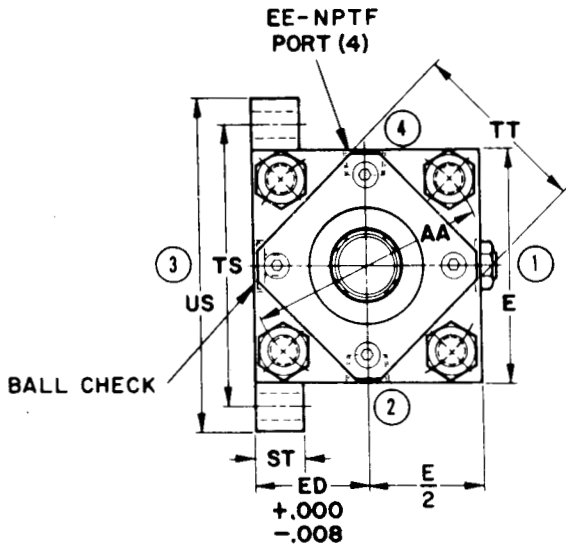
E-Mail: wgbcylinders@benjey.com



W. E. HENNELLS COMPANY, INC. NC5 SERIES PARTS LIST

REQ'D QTY.	PART	DESCRIPTION OF ITEM	REQ'D QTY.	PART	DESCRIPTION OF ITEM	REQ'D QTY.	PART	DESCRIPTION OF ITEM
1	NA	Piston Rod	8	NHH	Tie Rod Nuts	1	NN	Piston Rider
4	ND	Retainer Plate Cap Screws	1	NCX	Bearing Cartridge Assembly	1	NZ	Piston Nut
1	NE	Retainer Plate	1	NF	Bearing O-Ring	2	NL	Head O-Rings
1	NW	Rod End Head	1	NC	Bearing Housing	2	NUX	Ball Check Assembly
1	NO	Rod End Cushion O-Ring	1	NI	Bearing Insert	2	NU	Ball Check
1	NP	Rod End Cushion	1	MG	Rod Packing Set	2	NJ	Ball Check Seal
1	NM	Cylinder Tube	1	NFF	Rod Packing Spacer	2	NEE	Ball Check Ball
1	NCC	Blind End Head	1	NGG	Rod Packing Snap Ring	2	NKXX	Cushion Adjustment Screw
1	NY	Snap Ring Rear Cushion	1	MTX	Piston Assembly	2	NJ	Cushion Adjustment Seal
1	NAA	Cushion Ring Rear	1	NH	Piston	2	NK	Cushion Adjustment Nut
1	NBB	Disc Spacer Rear Cushion	1	NR	Piston Cups			
1	NDD	Rear Cushion O-Ring	2					

NC5-F HEAVY DUTY AIR CYLINDERS

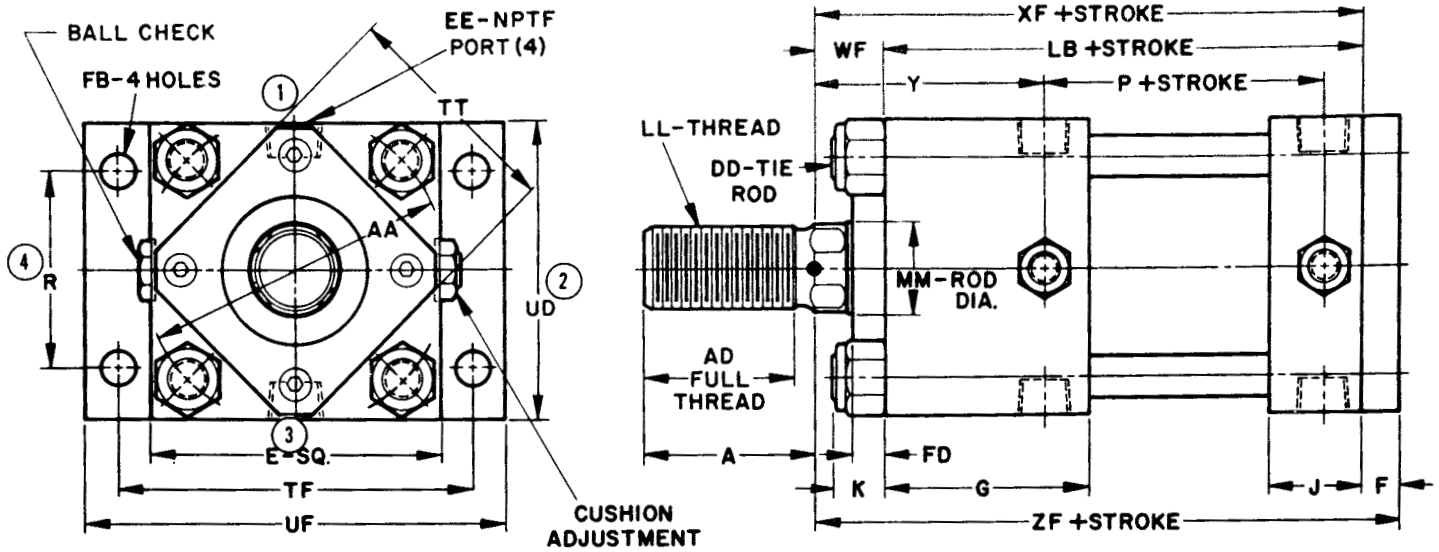


BORE	1-1/2	2	2-1/2	3-1/4	4	4-1/2	5	6	8
A	2	2-1/8	2-5/8	2-5/8	3-1/8	3-1/8	4-1/8	4-1/8	5-5/8
AA	2.56	3.19	3.71	4.78	5.49	6.19	6.62	7.78	10.25
AD	1-3/4	1-3/4	2-3/8	2-3/8	2-3/4	2-3/4	3-3/4	3-3/4	5-1/8
DD	3/8 - 24	7/16 - 20	1/2 - 20	5/8 - 18	5/8 - 18	5/8 - 18	3/4 - 16	3/4 - 16	1-1/8 - 12
E	2-1/2	3	3-1/2	4-1/2	5	5-1/2	6	7	9-1/4
EE	1/2	1/2	1/2	1/2	3/4	3/4	3/4	3/4	1
ED	1-1/4	1-1/2	1-3/4	2-1/4	2-1/2	2-3/4	3-1/4	3-3/4	4-3/4
FD	3/8	3/8	3/8	1/2	1/2	1/2	1/2	1/2	1/2
G	2-5/8	2-13/16	3-3/16	3-3/16	3-7/16	3-7/16	4	4	4-3/4
J	1-7/16	1-7/16	1-7/16	1-7/16	1-5/8	1-5/8	1-5/8	1-5/8	2
K	33/64	33/64	21/32	27/32	27/32	27/32	15/16	15/16	1-1/4
LB	6-3/8	6-9/16	7-7/16	7-7/16	8-3/16	8-3/16	9-3/8	9-3/8	10-3/4
LL	3/4-10 UNC-3	1 - 8 UNC-3	1-1/4-12 UNF-3	1-1/4-12 UNF-3	1-1/2-12 UNF-3	1-1/2-12 UNF-3	2-12 UN-3	2-12 UN-3	2-3/4 - 12 UN-3
MM	7/8	1-1/8	1-3/8	1-3/8	1-5/8	1-5/8	2-1/8	2-1/8	3
P	3-13/16	3-7/8	4-3/8	4-3/8	4-3/4	4-3/4	5-3/8	5-3/8	6
SB	13/32	13/32	17/32	17/32	21/32	21/32	25/32	25/32	1-1/32
SC	1-9/16	1-1/2	1-7/8	1-7/8	2	2	2-3/8	2-3/8	2-1/4
SF	9/16	5/8	5/8	5/8	3/4	3/4	7/8	7/8	1
SS	3-13/16	4	4-3/4	4-3/4	5	5	6	6	6-3/4
ST	9/16	9/16	13/16	15/16	15/16	15/16	1-1/16	1-1/16	1-3/16
SU	9/16	9/16	1-1/16	1-1/16	13/16	13/16	1-3/8	1-3/8	1-1/8
SW	1-9/16	1-9/16	1-7/16	1-7/16	1-15/16	1-15/16	1-7/8	1-7/8	2-1/8
TS	3-1/2	4	4-3/4	5-1/2	6-1/4	7	7-1/2	8-1/2	11-1/4
TT	2	2-1/4	2-3/4	3-1/2	4	4	4-1/2	4-1/2	7
US	4-1/4	4-3/4	5-3/4	6-1/2	7-1/2	8-1/4	9	10	13-1/4
WF	1-1/16	1-1/8	1-1/8	1-1/8	1-3/8	1-3/8	1-5/8	1-5/8	1-3/4
XS	2-1/16	2-1/8	2-3/8	2-3/8	2-5/8	2-5/8	3-1/8	3-1/8	3-5/8
Y	3	3-1/4	3-5/8	3-5/8	4	4	4-13/16	4-13/16	5-1/2
ZB	7-61/64	8-13/64	9-7/32	9-13/32	10-13/32	10-13/32	11-15/16	11-15/16	13-3/4

ORDERING INFORMATION

Non-Cushioned	Cushioned Blind End	Cushioned Rod End	Cushioned Both Ends
NC5-F	NC5-F-B	NC5-F-R	NC5-F-BR

NC5-B HEAVY DUTY AIR CYLINDERS



BORE	1-1/2	2	2-1/2	3-1/4	4	4-1/2	5	6	8
A	2	2-1/8	2-5/8	2-5/8	3-1/8	3-1/8	4-1/8	4-1/8	5-5/8
AA	2.56	3.19	3.71	4.78	5.49	6.19	6.62	7.78	10.25
AD	1-3/4	1-3/4	2-3/8	2-3/8	2-3/4	2-3/4	3-3/4	3-3/4	5-1/8
DD	3/8 - 24	7/16 - 20	1/2 - 20	5/8 - 18	5/8 - 18	5/8 - 18	3/4 - 16	3/4 - 16	1-1/8 - 12
E	2-1/2	3	3-1/2	4-1/2	5	5-1/2	6	7	9-1/4
EE	1/2	1/2	1/2	1/2	3/4	3/4	3/4	3/4	1
F	1/2	1/2	5/8	5/8	5/8	5/8	3/4	3/4	1
FB	13/32	13/32	17/32	17/32	21/32	21/32	25/32	25/32	1-1/32
FD	3/8	3/8	3/8	1/2	1/2	1/2	1/2	1/2	1/2
G	2-5/8	2-13/16	3-3/16	3-3/16	3-7/16	3-7/16	4	4	4-3/4
J	1-7/16	1-7/16	1-7/16	1-7/16	1-5/8	1-5/8	1-5/8	1-5/8	2
K	33/64	33/64	21/32	27/32	27/32	27/32	15/16	15/16	1-1/4
LB	6-3/8	6-9/16	7-7/16	7-7/16	8-3/16	8-3/16	9-3/8	9-3/8	10-3/4
LL	3/4-10 UNC-3	1-8 UNC-3	1-1/4-12 UNF-3	1-1/4-12 UNF-3	1-1/2-12 UNF-3	1-1/2-12 UNF-3	2-12 UN-3	2-12 UN-3	2-3/4-12 UN-3
MM	7/8	1-1/8	1-3/8	1-3/8	1-5/8	1-5/8	2-1/8	2-1/8	3
P	3-13/16	3-7/8	4-3/8	4-3/8	4-3/4	4-3/4	5-3/8	5-3/8	6
R	1-1/2	2	2-1/2	3	3-1/2	4	4-1/2	5-1/2	7
TF	3-1/2	4	4-3/4	5-1/2	6-1/4	7	7-1/2	8-1/2	11-1/4
TT	2	2-1/4	2-3/4	3-1/2	4	4	4-1/2	4-1/2	7
UD	2-1/2	3	3-1/2	4-1/2	5	5-1/2	6	7	10
UF	4-1/4	4-3/4	5-3/4	6-1/2	7-1/2	8-1/4	9	10	13-1/4
WF	1-1/16	1-1/8	1-1/8	1-1/8	1-3/8	1-3/8	1-5/8	1-5/8	1-3/4
XF	7-7/16	7-11/16	8-9/16	8-9/16	9-9/16	9-9/16	11	11	12-1/2
Y	3	3-1/4	3-5/8	3-5/8	4	4	4-13/16	4-13/16	5-1/2
ZF	7-15/16	8-3/16	9-3/16	9-3/16	10-3/16	10-3/16	11-3/4	11-3/4	13-1/2

ORDERING INFORMATION

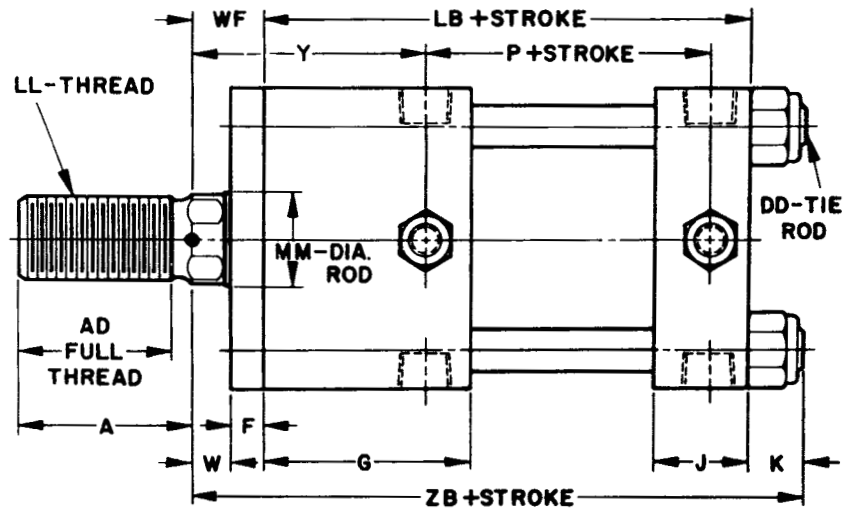
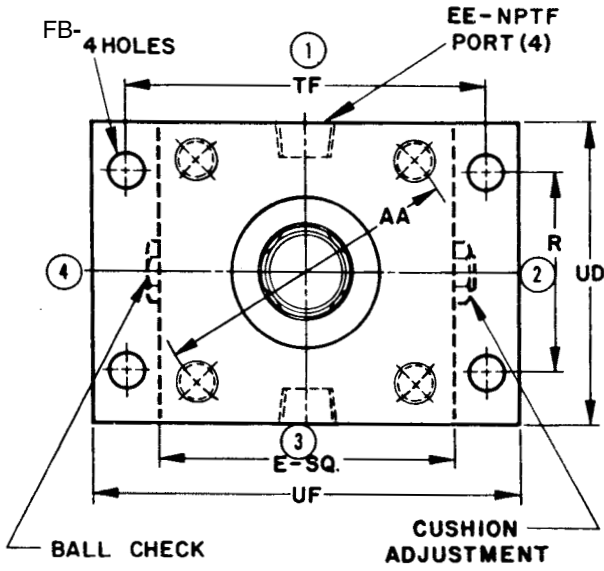
Non-Cushioned	Cushioned Blind End	Cushioned Rod End	Cushioned Both Ends
NC5-B	NC5-B-B	NC5-B-R	NC5-B-BR

WGBenjoy *Cylinders*

Formerly DE-STA-CO Cylinders

2293 Werth Road, Alpena, MI 49707
 Phone: 800-942-2957 Fax: 866-942-3297
 E-Mail: wgb cylinders@benjoy.com

NC5-R HEAVY DUTY AIR CYLINDERS

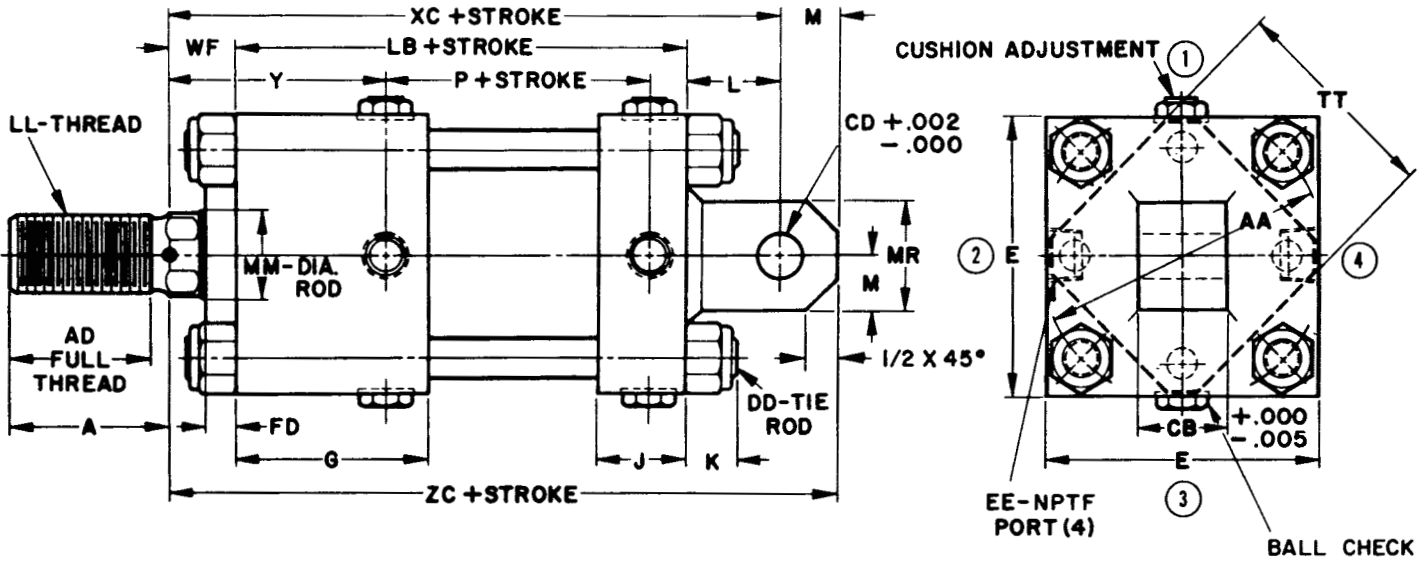


BORE	1-1/2	2	2-1/2	3-1/4	4	4-1/2	5	6	8
A	2	2-1/8	2-5/8	2-5/8	3-1/8	3-1/8	4-1/8	4-1/8	5-5/8
AA	2.56	3.19	3.71	4.78	5.49	6.19	6.62	7.78	10.25
AD	1-3/4	1-3/4	2-3/8	2-3/8	2-3/4	2-3/4	3-3/4	3-3/4	5-1/8
DD	3/8 -24	7/16 -20	1/2 -20	5/8 -18	5/8 -18	5/8 -18	3/4 -16	3/4 -16	1-1/8 -12
E	2-1/2	3	3-1/2	4-1/2	5	5-1/2	6	7	9-1/4
EE	1/2	1/2	1/2	1/2	3/4	3/4	3/4	3/4	1
F	1/2	1/2	5/8	5/8	5/8	5/8	3/4	3/4	1
FB	13/32	13/32	17/32	17/32	21/32	21/32	25/32	25/32	1-1/32
G	2-5/8	2-13/16	3-3/16	3-3/16	3-7/16	3-7/16	4	4	4-3/4
J	1-7/16	1-7/16	1-7/16	1-7/16	1-5/8	1-5/8	1-5/8	1-5/8	2
K	33/64	33/64	21/32	27/32	27/32	27/32	15/16	15/16	1-1/4
LB	6-3/8	6-9/16	7-7/16	7-7/16	8-3/16	8-3/16	9-3/8	9-3/8	10-3/4
LL	3/4-10 UNC-3	1-8 UNC-3	1-1/4-12 UNF-3	1-1/4-12 UNF-3	1-1/2-12 UNF-3	1-1/2-12 UNF-3	2-12 UN-3	2-12 UN-3	2-3/4-12 UN-3
MM	7/8	1-1/8	1-3/8	1-3/8	1-5/8	1-5/8	2-1/8	2-1/8	3
P	3-13/16	3-7/8	4-3/8	4-3/8	4-3/4	4-3/4	5-3/8	5-3/8	6
R	1-1/2	2	2-1/2	3	3-1/2	4	4-1/2	5-1/2	7
TF	3-1/2	4	4-3/4	5-1/2	6-1/4	7	7-1/2	8-1/2	11-1/4
UD	2-1/2	3	3-1/2	4-1/2	5	5-1/2	6	7	10
UF	4-1/4	4-3/4	5-3/4	6-1/2	7-1/2	8-1/4	9	10	13-1/4
W	9/16	5/8	1/2	1/2	3/4	3/4	7/8	7/8	3/4
WF	1-1/16	1-1/8	1-1/8	1-1/8	1-3/8	1-3/8	1-5/8	1-5/8	1-3/4
Y	3	3-1/4	3-5/8	3-5/8	4	4	4-13/16	4-13/16	5-1/2
ZB	7-61/64	8-13/64	9-7/32	9-13/32	10-13/32	10-13/32	11-15/16	11-15/16	13-3/4

ORDERING INFORMATION

Non-Cushioned	Cushioned Blind End	Cushioned Rod End	Cushioned Both Ends
NC5-R	NC5-R-B	NC5-R-R	NC5-R-BR

NC5-C HEAVY DUTY AIR CYLINDERS



BORE	1-1/2	2	2-1/2	3-1/4	4	4-1/2	5	6	8
A	2	2-1/8	2-5/8	2-5/8	3-1/8	3-1/8	4-1/8	4-1/8	5-5/8
AA	2.56	3.19	3.71	4.78	5.49	6.19	6.62	7.78	10.25
AD	1-3/4	1-3/4	2-3/8	2-3/8	2-3/4	2-3/4	3-3/4	3-3/4	5-1/8
CB	1	1	1-1/2	1-1/2	2	2	2-1/2	2-1/2	3
CD	.626	.626	.751	.751	1.001	1.001	1.501	1.501	2.001
DD	3/8 - 24	7/16 - 20	1/2 - 20	5/8 - 18	5/8 - 18	5/8 - 18	3/4 - 16	3/4 - 16	1-1/8 - 12
E	2-1/2	3	3-1/2	4-1/2	5	5-1/2	6	7	9-1/4
EE	1/2	1/2	1/2	1/2	3/4	3/4	3/4	3/4	1
FD	3/8	3/8	3/8	1/2	1/2	1/2	1/2	1/2	1/2
G	2-5/8	2-13/16	3-3/16	3-3/16	3-7/16	3-7/16	4	4	4-3/4
J	1-7/16	1-7/16	1-7/16	1-7/16	1-5/8	1-5/8	1-5/8	1-5/8	2
K	33/64	33/64	21/32	27/32	27/32	27/32	15/16	15/16	1-1/4
L	1-5/16	1-1/4	1-3/8	1-1/2	1-3/4	1-3/4	2-1/8	2-1/8	3
LB	6-3/8	6-9/16	7-7/16	7-7/16	8-3/16	8-3/16	9-3/8	9-3/8	10-3/4
LL	3/4-10 UNC-3	1 - 8 UNC-3	1-1/4-12 UNF-3	1-1/4-12 UNF-3	1-1/2-12 UNF-3	1-1/2-12 UNF-3	2-12 UN -3	2-12 UN -3	2-3/4 -12 UN -3
M	3/4	3/4	7/8	7/8	1-1/8	1-1/8	1-1/2	1-1/2	2
MM	7/8	1-1/8	1-3/8	1-3/8	1-5/8	1-5/8	2-1/8	2-1/8	3
MR	1-1/2	1-1/2	1-3/4	1-3/4	2-1/4	2-1/4	3	3	4
P	3-13/16	3-7/8	4-3/8	4-3/8	4-3/4	4-3/4	5-3/8	5-3/8	6
TT	2	2-1/4	2-3/4	3-1/2	4	4	4-1/2	4-1/2	7
WF	1-1/16	1-1/8	1-1/8	1-1/8	1-3/8	1-3/8	1-5/8	1-5/8	1-3/4
XC	8-3/4	8-15/16	9-15/16	10-1/16	11-5/16	11-5/16	13-1/8	13-1/8	15-1/2
Y	3	3-1/4	3-5/8	3-5/8	4	4	4-13/16	4-13/16	5-1/2
ZC	9-1/2	9-11/16	10-13/16	10-15/16	12-7/16	12-7/16	14-5/8	14-5/8	17-1/2

ORDERING INFORMATION

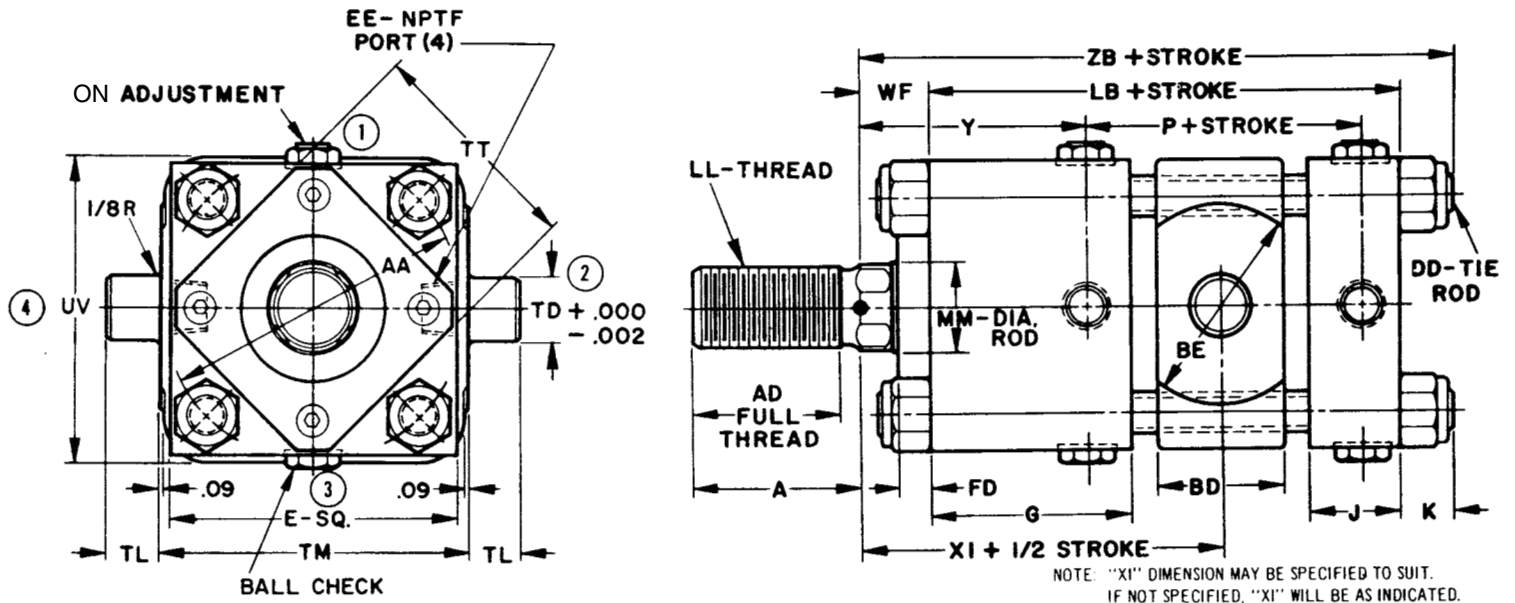
Non-Cushioned	Cushioned Blind End	Cushioned Rod End	Cushioned Both Ends
NC5-C	NC5-C-B	NC5-C-R	NC5-C-BR

WGB Benjey *Cylinders*

Formerly DE-STA-CO Cylinders

2293 Werth Road, Alpena, MI 49707
 Phone: 800-942-2957 Fax: 866-942-3297
 E-Mail: wgbcylinders@benjey.com

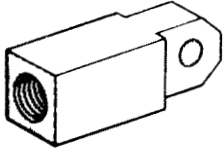
NC5-T HEAVY DUTY AIR CYLINDERS



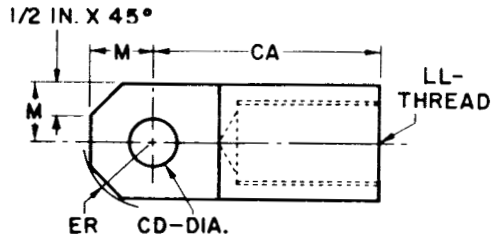
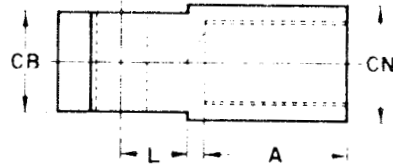
BORE	1-1/2	2	2-1/2	3-1/4	4	4-1/2	5	6	8
A	2	2-1/8	2-5/8	2-5/8	3-1/8	3-1/8	4-1/8	4-1/8	5-5/8
AA	2.56	3.19	3.71	4.78	5.49	6.19	6.62	7.78	10.25
AD	1-3/4	1-3/4	2-3/8	2-3/8	2-3/4	2-3/4	3-3/4	3-3/4	5-1/8
BD	1-3/4	1-3/4	1-3/4	2	2-1/8	2-1/2	2-1/2	2-1/2	3
BE	2-1/16	2-1/16	2-3/8	2-3/4	3-1/8	3-3/4	4	5	4-1/2
DD	3/8 -24	7/16 -20	1/2 -20	5/8 -18	5/8 -18	5/8 -18	3/4 -16	3/4 -16	1-1/8 -12
E	2-1/2	3	3-1/2	4-1/2	5	5-1/2	6	7	9-1/4
EE	1/2	1/2	1/2	1/2	3/4	3/4	3/4	3/4	1
FD	3/8	3/8	3/8	1/2	1/2	1/2	1/2	1/2	1/2
G	2-5/8	2-13/16	3-3/16	3-3/16	3-7/16	3-7/16	4	4	4-3/4
J	1-7/16	1-7/16	1-7/16	1-7/16	1-5/8	1-5/8	1-5/8	1-5/8	2
K	33/64	33/64	21/32	27/32	27/32	27/32	15/16	15/16	1-1/4
LB	6-3/8	6-9/16	7-7/16	7-7/16	8-3/16	8-3/16	9-3/8	9-3/8	10-3/4
LL	3/4-10 UNC-3	1-8 UNC-3	1-1/4-12 UNF-3	1-1/4-12 UNF-3	1-1/2-12 UNF-3	1-1/2-12 UNF-3	2-12 UN-3	2-12 UN-3	2-3/4-12 UN-3
MM	7/8	1-1/8	1-3/8	1-3/8	1-5/8	1-5/8	2-1/8	2-1/8	3
P	3-13/16	3-7/8	4-3/8	4-3/8	4-3/4	4-3/4	5-3/8	5-3/8	6
TD	.999	.999	.999	.999	1.499	1.499	1.499	1.499	1.999
TL	1	1	1	1	1-3/8	1-3/8	1-3/8	1-3/8	1-3/4
TM	2-1/2	3	3-1/2	4-1/2	5-3/4	6-1/4	7-1/4	8-1/4	11-1/2
TT	2	2-1/4	2-3/4	3-1/2	4	4	4-1/2	4-1/2	7
UV	2-3/4	3-1/4	3-3/4	4-1/2	5-1/2	6-1/4	7-1/4	8-1/4	10-1/2
WF	1-1/16	1-1/8	1-1/8	1-1/8	1-3/8	1-3/8	1-5/8	1-5/8	1-3/4
XI	4-27/32	5-1/8	5-3/4	5-3/4	6-3/8	6-3/8	7-1/2	7-1/2	8-1/2
Y	3	3-1/4	3-5/8	3-5/8	4	4	4-13/16	4-13/16	5-1/2
ZB	7-61/64	8-13/64	9-7/32	9-13/32	10-13/32	10-13/32	11-15/16	11-15/16	13-3/4

ORDERING INFORMATION

Non-Cushioned	Cushioned Blind End	Cushioned Rod End	Cushioned Both Ends
NC5-T	NC5-T-B	NC5-T-R	NC5-T-BR

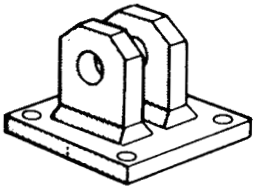


FEMALE EYE

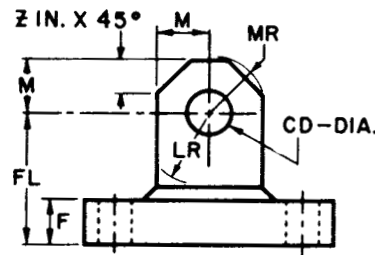
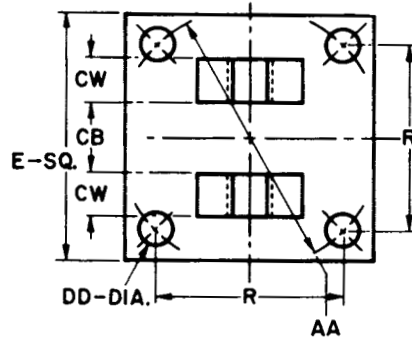


FEMALE EYE

BORE	1 1/2	2	2 1/2-3 1/4	4-4 1/2	5-6	8
PART NO.	F-100	F-101	F-102	F-103	F-104	F-105
LL	3/4-10	1-8	1-1/4-12	1-1/2-12	2-12	2-3/4-12
A	1.5 16	1.5 16	1.5 8	1.7 8	2.5 8	3.1 2
CA	2-1 4	2-5/8	3	3-1 2	4-5 8	6-1 2
CB	1	1	1-1/2	2	2-1/2	3
CD	5/8	5/8	3/4	1	1-1/2	2
CN	1-1/8	1-1/2	1-3/4	2-1/4	3	4
ER	.790	.790	.953	1.286	1.805	2.500
L	7/8	7/8	1-1/16	1-3/8	1-3/4	2-1/2
M	3/4	3/4	7/8	1-1/8	1-1/2	2

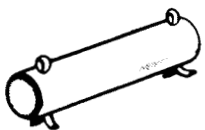


CLEVIS BRACKET

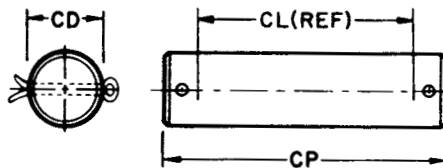


CLEVIS BRACKET

BORE	1 1/2-2	2 1/2-3 1/4	4-4 1/2	5-6	8
PART NO.	F-201	F-202	F-203	F-204	F-205
AA	3.71	4.78	6.19	7.78	10.25
CB	1	1-1/2	2	2-1/2	3
CD	5/8	3/4	1	1-1/2	2
CW	5/8	3/4	1	1-1/4	1-1/2
DD	15/32	11/16	11/16	13/16	1-3/16
E	3-1/2	4-1/2	5-1/2	7	9-1/4
F	5/8	3/4	3/4	1	1
FL	1-7/8	2-1/8	2-1/2	3-1/4	4-1/8
LR	1-1/16	1-1/8	1-7/16	1-7/8	2-5/8
M	3/4	7/8	1-1/8	1-1/2	2
MR	7.90	9.53	1.286	1.679	2.359
R	2.62	3.38	4.38	5.50	7.25
Z	1/2	1/2	1/2	3/4	3/4



PIVOT PIN

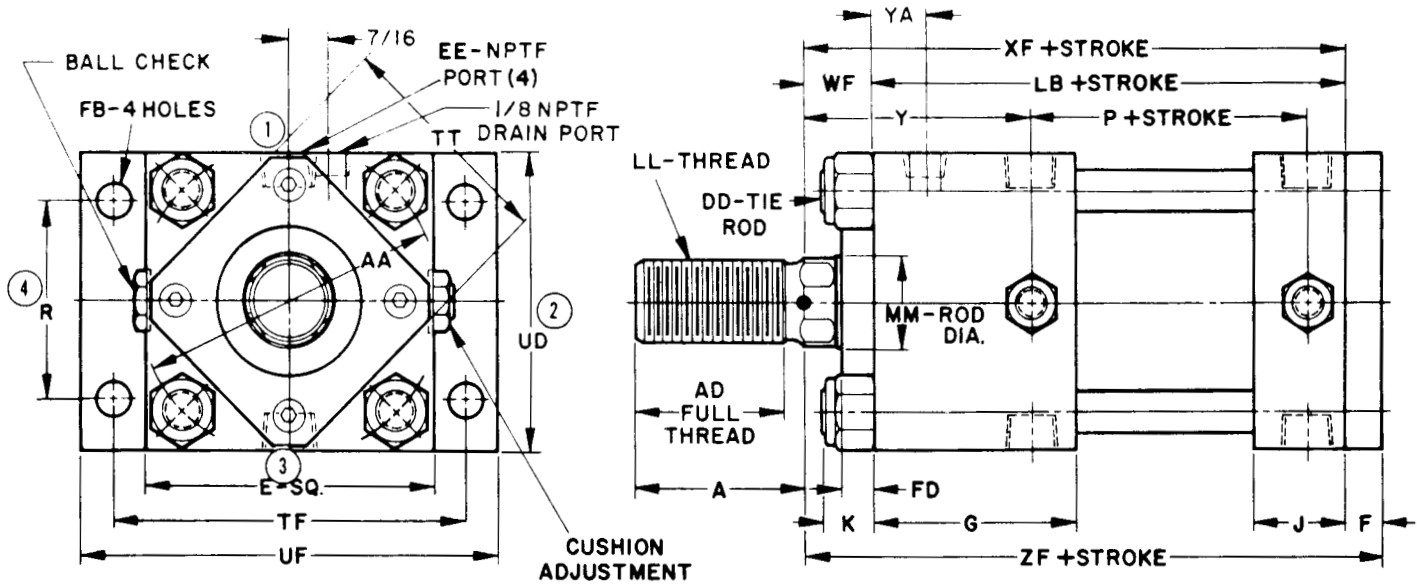


PIVOT PIN

BORE	1 1/2-2	2 1/2-3 1/4	4-4 1/2	5-6	8
PART NO.	F-301	F-302	F-303	F-304	F-305
CD	5/8	3/4	1	1-1/2	2
CL	2-1/4	3	4	5	6
CP	2-3/4	3-1/2	4-1/2	5-9/16	6-9/16

PIVOT PINS MUST BE ORDERED AS SEPARATE PARTS TO FIT MATING CLEVIS, EYE OR CYLINDER

HD1-B LOW PSI HYDRAULIC CYLINDERS

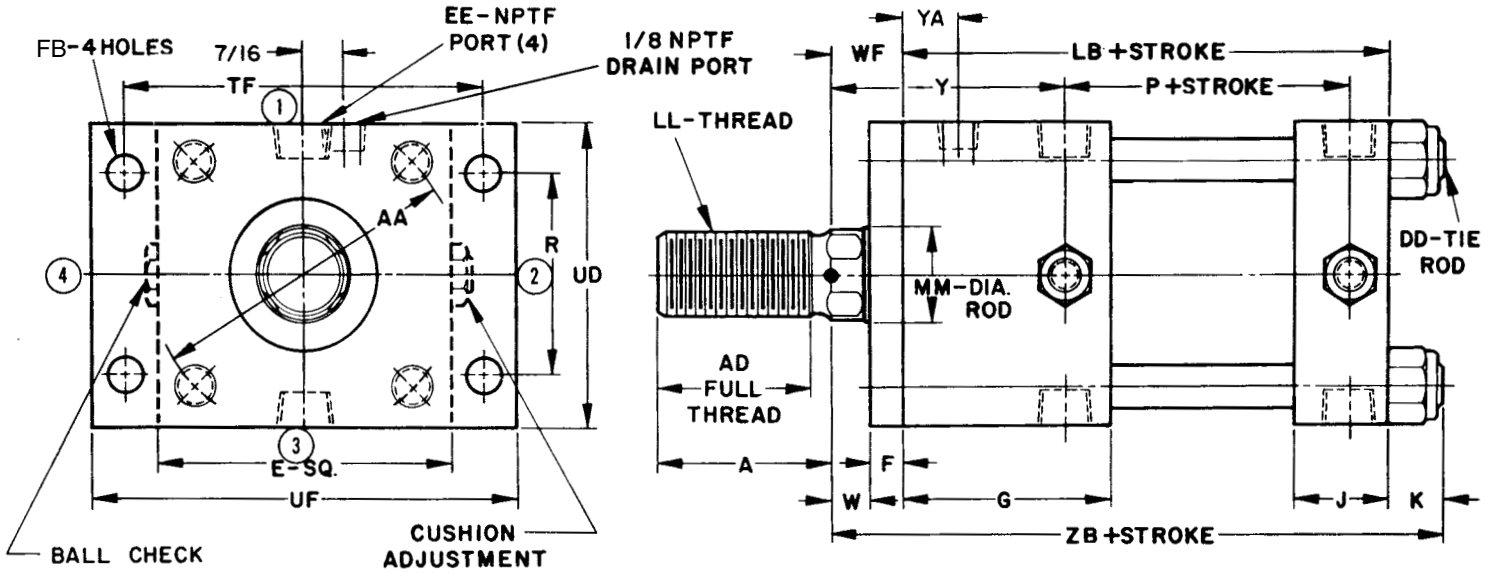


BORE	1-1/2	2	2-1/2	3-1/4	4	4-1/2	5	6	8
A	2	2-1/8	2-5/8	2-5/8	3-1/8	3-1/8	4-1/8	4-1/8	5-5/8
AA	2.56	3.19	3.71	4.78	5.49	6.19	6.62	7.78	10.25
AD	1-3/4	1-3/4	2-3/8	2-3/8	2-3/4	2-3/4	3-3/4	3-3/4	5-1/8
DD	3/8 24	7/16 20	1/2 20	5/8 18	5/8 18	5/8 18	3/4 16	3/4 16	1-1/8 12
E	2-1/2	3	3-1/2	4-1/2	5	5-1/2	6	7	9-1/4
EE	1-2	1/2	1/2	1/2	3/4	3/4	1	1	1 1/4
F	1/2	1/2	5/8	5/8	5/8	5/8	3/4	3/4	1
FB	13/32	13/32	17/32	17/32	21/32	21/32	25/32	25/32	1-1/32
FD	3/8	3/8	3/8	1/2	1/2	1/2	1/2	1/2	1/2
G	2-5/8	2-13/16	3-3/16	3-3/16	3-7/16	3-7/16	4	4	4-3/4
J	1-7/16	1-7/16	1-7/16	1-7/16	1-5/8	1-5/8	1-5/8	1-5/8	2
K	33/64	33/64	21/32	27/32	27/32	27/32	15/16	15/16	1-1/4
LB	6-3/8	6-9/16	7-7/16	7-7/16	8-3/16	8-3/16	9-3/8	9-3/8	10-3/4
LL	3/4-10 UNC-3	1-8 UNC-3	1-1/4-12 UNF-3	1-1/4-12 UNF-3	1-1/2-12 UNF-3	1-1/2-12 UNF-3	2-12 UN-3	2-12 UN-3	2-3/4-12 UN-3
MM	7/8	1-1/8	1-3/8	1-3/8	1-5/8	1-5/8	2-1/8	2-1/8	3
P	3-13/16	3-7/8	4-3/8	4-3/8	4-3/4	4-3/4	5-3/8	5-3/8	6
R	1-1/2	2	2-1/2	3	3-1/2	4	4-1/2	5-1/2	7
TF	3-1/2	4	4-3/4	5-1/2	6-1/4	7	7-1/2	8-1/2	11-1/4
TT	2	2-1/4	2-3/4	3-1/2	4	4	4-1/2	4-1/2	7
UD	2-1/2	3	3-1/2	4-1/2	5	5-1/2	6	7	10
UF	4-1/4	4-3/4	5-3/4	6-1/2	7-1/2	8-1/4	9	10	13-1/4
WF	1-1/16	1-1/8	1-1/8	1-1/8	1-3/8	1-3/8	1-5/8	1-5/8	1-3/4
XF	7-7/16	7-11/16	8-9/16	8-9/16	9-9/16	9-9/16	11	11	12-1/2
Y	3	3-1/4	3-5/8	3-5/8	4	4	4-13/16	4-13/16	5-1/2
YA	7-16	15-32	19-32	19-32	11-16	11-16	13-16	13-16	27-32
ZF	7-15/16	8-3/16	9-3/16	9-3/16	10-3/16	10-3/16	11-3/4	11-3/4	13-1/2

ORDERING INFORMATION

Non-Cushioned	Cushioned Blind End	Cushioned Rod End	Cushioned Both Ends
HDI-B	HDI-B-B	HDI-B-R	HDI-B-BR

HD1-R LOW PSI HYDRAULIC CYLINDERS



BORE	1-1/2	2	2-1/2	3-1/4	4	4-1/2	5	6	8
A	2	2-1/8	2-5/8	2-5/8	3-1/8	3-1/8	4-1/8	4-1/8	5-5/8
AA	2.56	3.19	3.71	4.78	5.49	6.19	6.62	7.78	10.25
AD	1-3/4	1-3/4	2-3/8	2-3/8	2-3/4	2-3/4	3-3/4	3-3/4	5-1/8
DD	3/8 -24	7/16 -20	1/2 -20	5/8 -18	5/8 -18	5/8 -18	3/4 -16	3/4 -16	1-1/8 -12
E	2-1/2	3	3-1/2	4-1/2	5	5-1/2	6	7	9-1/4
EE	1/2	1/2	1/2	1/2	3/4	3/4	1	1	1-1/4
F	1/2	1/2	5/8	5/8	5/8	5/8	3/4	3/4	1
FB	13/32	13/32	17/32	17/32	21/32	21/32	25/32	25/32	1-1/32
G	2-5/8	2-13/16	3-3/16	3-3/16	3-7/16	3-7/16	4	4	4-3/4
J	1-7/16	1-7/16	1-7/16	1-7/16	1-5/8	1-5/8	1-5/8	1-5/8	2
K	33/64	33/64	21/32	27/32	27/32	27/32	15/16	15/16	1-1/4
LB	6-3/8	6-9/16	7-7/16	7-7/16	8-3/16	8-3/16	9-3/8	9-3/8	10-3/4
LL	3/4-10 UNC-3	1-8 UNC-3	1-1/4-12 UNF-3	1-1/4-12 UNF-3	1-1/2-12 UNF-3	1-1/2-12 UNF-3	2-12 UN-3	2-12 UN-3	2-3/4-12 UN-3
MM	7/8	1-1/8	1-3/8	1-3/8	1-5/8	1-5/8	2-1/8	2-1/8	3
P	3-13/16	3-7/8	4-3/8	4-3/8	4-3/4	4-3/4	5-3/8	5-3/8	6
R	1-1/2	2	2-1/2	3	3-1/2	4	4-1/2	5-1/2	7
TF	3-1/2	4	4-3/4	5-1/2	6-1/4	7	7-1/2	8-1/2	11-1/4
UD	2-1/2	3	3-1/2	4-1/2	5	5-1/2	6	7	10
UF	4-1/4	4-3/4	5-3/4	6-1/2	7-1/2	8-1/4	9	10	13-1/4
W	9/16	5/8	1/2	1/2	3/4	3/4	7/8	7/8	3/4
WF	1-1/16	1-1/8	1-1/8	1-1/8	1-3/8	1-3/8	1-5/8	1-5/8	1-3/4
Y	3	3-1/4	3-5/8	3-5/8	4	4	4-13/16	4-13/16	5-1/2
YA	7/16	15/32	19/32	19/32	11/16	11/16	13/16	13/16	27/32
ZB	7-61/64	8-13/64	9-7/32	9-13/32	10-13/32	10-13/32	11-15/16	11-15/16	13-3/4

ORDERING INFORMATION

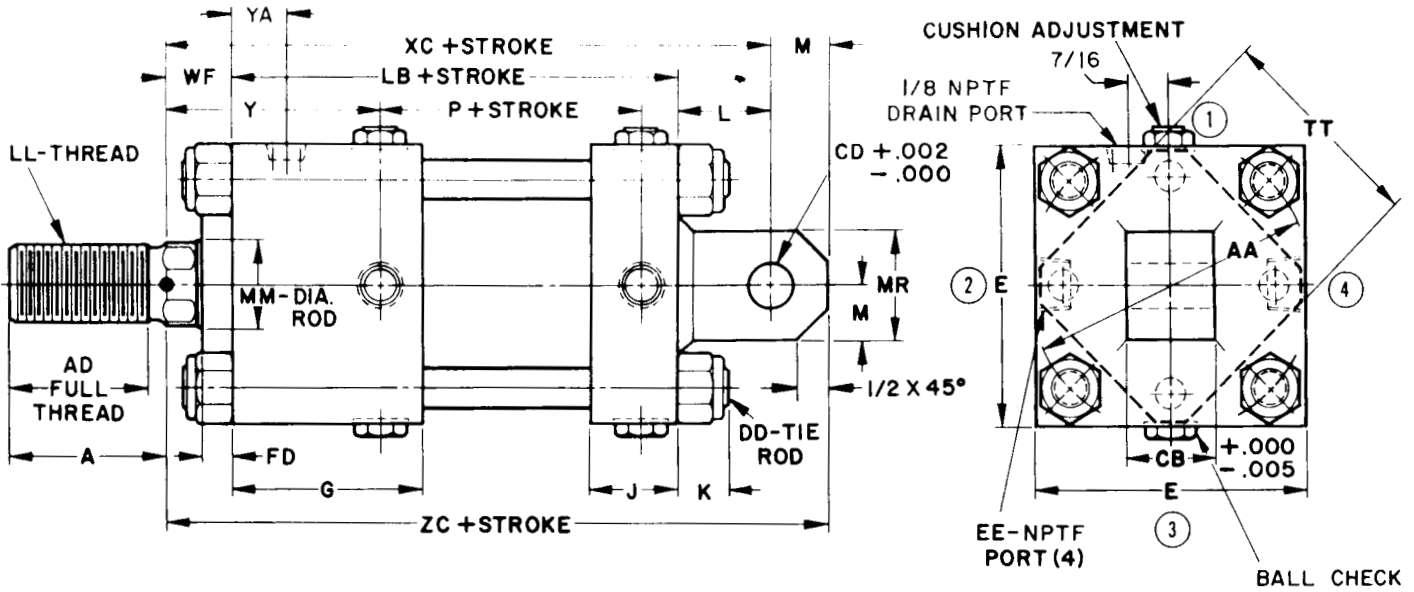
Non-Cushioned	Cushioned Blind End	Cushioned Rod End	Cushioned Both Ends
HDI-R	HDI-R-B	HDI-R-R	HDI-R-BR

WGBenjoy *Cylinders*

Formerly DE-STA-CO Cylinders

2293 Werth Road, Alpena, MI 49707
 Phone: 800-942-2957 Fax: 866-942-3297
 E-Mail: wgbcylinders@benjoy.com

HD1-C LOW PSI HYDRAULIC CYLINDERS

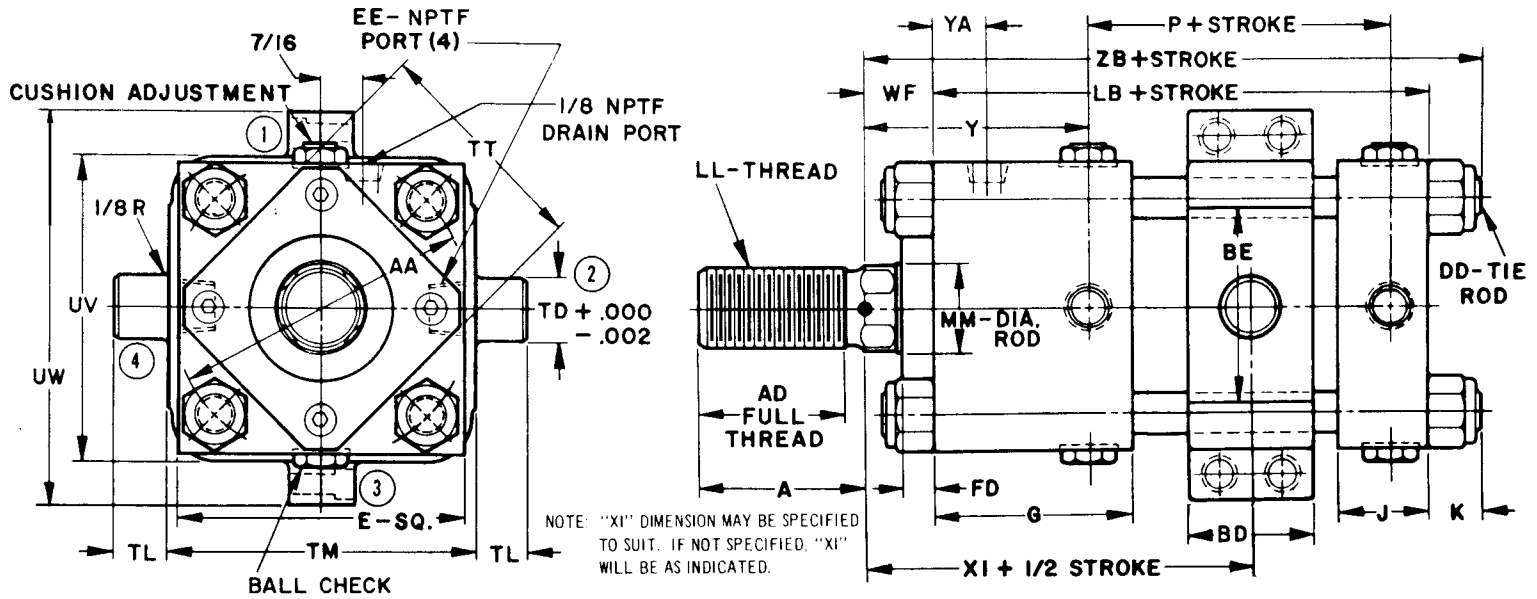


BORE	1-1/2	2	2-1/2	3-1/4	4	4-1/2	5	6	8
A	2	2-1/8	2-5/8	2-5/8	3-1/8	3-1/8	4-1/8	4-1/8	5-5/8
AA	2.56	3.19	3.71	4.78	5.49	6.19	6.62	7.78	10.25
AD	1-3/4	1-3/4	2-3/8	2-3/8	2-3/4	2-3/4	3-3/4	3-3/4	5-1/8
CB	1	1	1-1/2	1-1/2	2	2	2-1/2	2-1/2	3
CD	.626	.626	.751	.751	1.001	1.001	1.501	1.501	2.001
DD	3/8 UNF-3	7/16 UNF-3	1/2 UNF-3	5/8 UNF-3	5/8 UNF-3	5/8 UNF-3	3/4 UNF-3	3/4 UNF-3	1-1/8 UNF-3
E	2-1/2	3	3-1/2	4-1/2	5	5-1/2	6	7	9-1/4
EE	1-2	1-2	1-2	1-2	3-4	3-4	1	1	1-1-4
FD	3-8	3-8	3-8	1-2	1-2	1-2	1-2	1-2	1-2
G	2-5-8	2-13-16	3-3-16	3-3-16	3-7-16	3-7-16	4	4	4-3-4
J	1-7-16	1-7-16	1-7-16	1-7-16	1-5-8	1-5-8	1-5-8	1-5-8	2
K	33-64	33-64	21-32	27-32	27-32	27-32	15-16	15-16	1-1-4
L	1-5-16	1-1-4	1-3-8	1-1-2	1-3-4	1-3-4	2-1-8	2-1-8	3
LB	6-3-8	6-9-16	7-7-16	7-7-16	8-3-16	8-3-16	9-3-8	9-3-8	10-3-4
LL	3/4-10 UNC-3	1-8 UNC-3	1-1-4-12 UNF-3	1-1-4-12 UNF-3	1-1-2-12 UNF-3	1-1-2-12 UNF-3	2-12 UN-3	2-12 UN-3	2-3-4-12 UN-3
M	3-4	3-4	7-8	7-8	1-1-8	1-1-8	1-1-2	1-1-2	2
MM	7-8	1-1-8	1-3-8	1-3-8	1-5-8	1-5-8	2-1-8	2-1-8	3
MR	1-1-2	1-1-2	1-3-4	1-3-4	2-1-4	2-1-4	3	3	4
P	3-13-16	3-7-8	4-3-8	4-3-8	4-3-4	4-3-4	5-3-8	5-3-8	6
TT	2	2-1-4	2-3-4	3-1-2	4	4	4-1-2	4-1-2	7
WF	1-1-16	1-1-8	1-1-8	1-1-8	1-3-8	1-3-8	1-5-8	1-5-8	1-3-4
XC	8-3-4	8-15-16	9-15-16	10-1-16	11-5-16	11-5-16	13-1-8	13-1-8	15-1-2
Y	3	3-1-4	3-5-8	3-5-8	4	4	4-13-16	4-13-16	5-1-2
YA	7-16	15-32	19-32	19-32	11-16	11-16	13-16	13-16	27-32
ZC	9-1-2	9-11-16	10-13-16	10-15-16	12-7-16	12-7-16	14-5-8	14-5-8	17-1-2

ORDERING INFORMATION

Non-Cushioned	Cushioned Blind End	Cushioned Rod End	Cushioned Both Ends
HDI-C	HDI-C-B	HDI-C-R	HDI-C-BR

HD1-T LOW PSI HYDRAULIC CYLINDERS

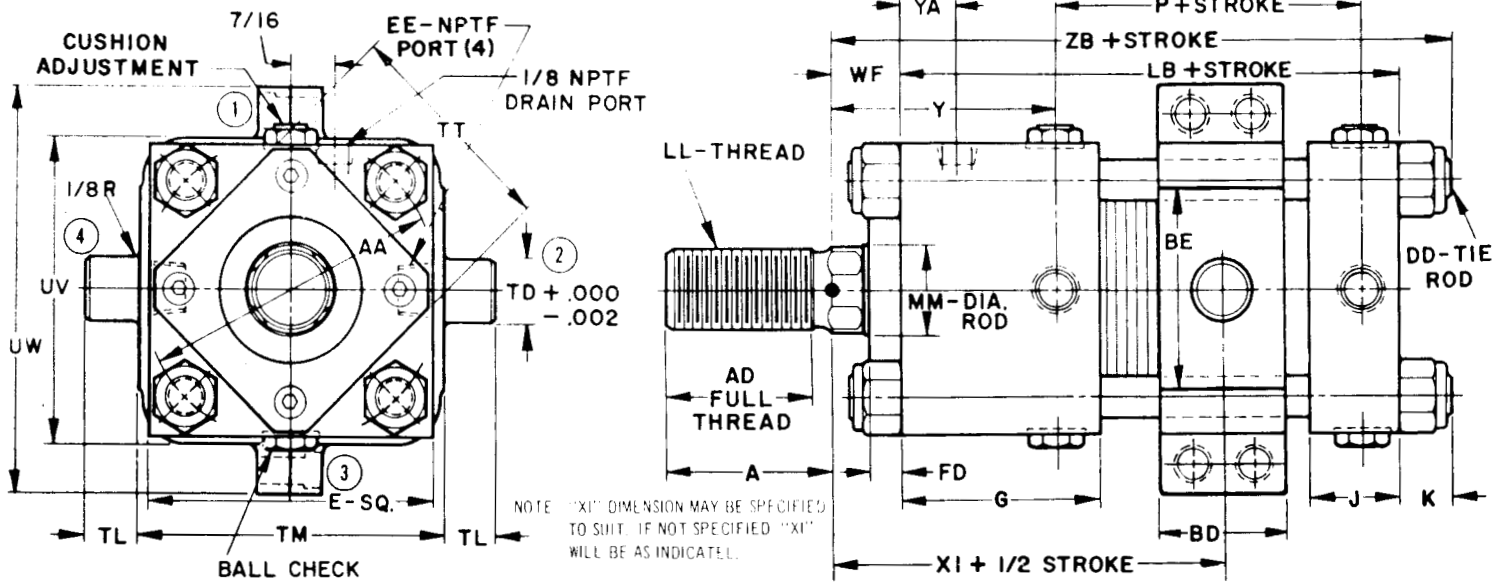


BORE	1-1/2	2	2-1/2	3-1/4	4	4-1/2	5	6	8
A	2	2-1/8	2-5/8	2-5/8	3-1/8	3-1/8	4-1/8	4-1/8	5-5/8
AA	2.56	3.19	3.71	4.78	5.49	6.19	6.62	7.78	10.25
AD	1-3/4	1-3/4	2-3/8	2-3/8	2-3/4	2-3/4	3-3/4	3-3/4	5-1/8
BD	1-11/16	1-11/16	1-11/16	1-15/16	2-3/16	2-7/16	2-7/16	2-7/16	2-15/16
BE	-	-	-	2-3/4	3-1/8	3-3/4	4-1/4	4-1/4	4-1/2
DD	3/8-24	7/16-20	1/2-20	5/8-18	5/8-18	5/8-18	3/4-16	3/4-16	1-1/8-12
E	2-1/2	3	3-1/2	4-1/2	5	5-1/2	6	7	9-1/4
EE	1/2	1/2	1/2	1/2	3/4	3/4	1	1	1-1/4
FD	3/8	3/8	3/8	1/2	1/2	1/2	1/2	1/2	1/2
G	2-5/8	2-13/16	3-3/16	3-3/16	3-7/16	3-7/16	4	4	4-3/4
J	1-7/16	1-7/16	1-7/16	1-7/16	1-5/8	1-5/8	1-5/8	1-5/8	2
K	33/64	33/64	21/32	27/32	27/32	27/32	15/16	15/16	1-1/4
LB	6-3/8	6-9/16	7-7/16	7-7/16	8-3/16	8-3/16	9-3/8	9-3/8	10-3/4
LL	3/4-10 UNC-3	1-8 UNC-3	1-1/4-12 UNF-3	1-1/4-12 UNF-3	1-1/2-12 UNF-3	1-1/2-12 UNF-3	2-12 UN-3	2-12 UN-3	2-3/4-12 UN-3
MM	7/8	1-1/8	1-3/8	1-3/8	1-5/8	1-5/8	2-1/8	2-1/8	3
P	3-13/16	3-7/8	4-3/8	4-3/8	4-3/4	4-3/4	5-3/8	5-3/8	6
TD	.999	.999	1.374	1.374	1.499	1.499	1.999	1.999	2.499
TL	1	1	1	1	1-3/8	1-3/8	1-3/8	1-3/8	1-3/4
TM	2-1/2	3	3-1/2	4-1/2	5-3/4	6-1/4	7-1/4	8-1/4	11-1/2
TT	2	2-1/4	2-3/4	3-1/2	4	4	4-1/2	4-1/2	7
UV	2-3/4	3-1/4	3-3/4	4-1/2	5-1/2	6-1/4	7-1/4	8-1/4	10-1/2
UW	4-7/16	5-1/8	5-5/8	6-1/2	7-1/2	8-3/4	9-3/4	10-3/4	13-1/2
WF	1-1/16	1-1/8	1-1/8	1-1/8	1-3/8	1-3/8	1-5/8	1-5/8	1-3/4
XI	4-27/32	5-1/8	5-3/4	5-3/4	6-3/8	6-3/8	7-1/2	7-1/2	8-1/2
Y	3	3-1/4	3-5/8	3-5/8	4	4	4-13/16	4-13/16	5-1/2
YA	7/16	15/32	19/32	19/32	11/16	11/16	13/16	13/16	27/32
ZB	7-61/64	8-13/64	9-7/32	9-13/32	10-13/32	10-13/32	11-15/16	11-15/16	13-3/4

ORDERING INFORMATION

Non-Cushioned	Cushioned Blind End	Cushioned Rod End	Cushioned Both Ends
HDI-T	HDI-T-B	HDI-T-R	HDI-T-BR

HD1-AT LOW PSI HYDRAULIC CYLINDERS



BORE	1-1/2	2	2-1/2	3-1/4	4	4-1/2	5	6	8
A	2	2-1/8	2-5/8	2-5/8	3-1/8	3-1/8	4-1/8	4-1/8	5-5/8
AA	2.56	3.19	3.71	4.78	5.49	6.19	6.62	7.78	10.25
AD	1-3/4	1-3/4	2-3/8	2-3/8	2-3/4	2-3/4	3-3/4	3-3/4	5-1/8
BD	1-11/16	1-11/16	1-11/16	1-15/16	2-3/16	2-7/16	2-7/16	2-7/16	2-15/16
BE				2-3/4	3-1/8	3-3/4	4-1/4	4-1/4	4-1/2
DD	3/8-24	7/16-20	1/2-20	5/8-18	5/8-18	5/8-18	3/4-16	3/4-16	1-1/8-12
E	2-1/2	3	3-1/2	4-1/2	5	5-1/2	6	7	9-1/4
EE	1/2	1/2	1/2	1/2	3/4	3/4	1	1	1-1/4
FD	3/8	3/8	3/8	1/2	1/2	1/2	1/2	1/2	1/2
G	2-5/8	2-13/16	3-3/16	3-3/16	3-7/16	3-7/16	4	4	4-3/4
J	1-7/16	1-7/16	1-7/16	1-7/16	1-5/8	1-5/8	1-5/8	1-5/8	2
K	33/64	33/64	21/32	27/32	27/32	27/32	15/16	15/16	1-1/4
LB	6-3/8	6-9/16	7-7/16	7-7/16	8-3/16	8-3/16	9-3/8	9-3/8	10-3/4
LL	3/4-10 UNC-3	1-8 UNC-3	1-1/4-12 UNF-3	1-1/4-12 UNF-3	1-1/2-12 UNF-3	1-1/2-12 UNF-3	2-12 UN-3	2-12 UN-3	2-3/4-12 UN-3
MM	7/8	1-1/8	1-3/8	1-3/8	1-5/8	1-5/8	2-1/8	2-1/8	3
P	3-13/16	3-7/8	4-3/8	4-3/8	4-3/4	4-3/4	5-3/8	5-3/8	6
TD	.999	.999	1.374	1.374	1.499	1.499	1.999	1.999	2.499
TL	1	1	1	1	1-3/8	1-3/8	1-3/8	1-3/8	1-3/4
TM	2-1/2	3	3-1/2	4-1/2	5-3/4	6-1/4	7-1/4	8-1/4	11-1/2
TT	2	2-1/4	2-3/4	3-1/2	4	4	4-1/2	4-1/2	7
UV	2-3/4	3-1/4	3-3/4	4-1/2	5-1/2	6-1/4	7-1/4	8-1/4	10-1/2
UW	4-7/16	5-1/8	5-5/8	6-1/2	7-1/2	8-3/4	9-3/4	10-3/4	13-1/2
WF	1-1/16	1-1/8	1-1/8	1-1/8	1-3/8	1-3/8	1-5/8	1-5/8	1-3/4
XI	4-27/32	5-1/8	5-3/4	5-3/4	6-3/8	6-3/8	7-1/2	7-1/2	8-1/2
Y	3	3-1/4	3-5/8	3-5/8	4	4	4-13/16	4-13/16	5-1/2
YA	7-1/16	15-3/32	19-3/32	19-3/32	11-1/16	11-1/16	13-1/16	13-1/16	27-3/32
ZB	7-61/64	8-13/64	9-7/32	9-13/32	10-13/32	10-13/32	11-15/16	11-15/16	13-3/4

ORDERING INFORMATION

Non-Cushioned	Cushioned Blind End	Cushioned Rod End	Cushioned Both Ends
HDI-AT	HDI-AT-B	HDI-AT-R	HDI-AT-BR

WGBenjoy *Cylinders*

Formerly DE-STA-CO Cylinders

2293 Werth Road, Alpena, MI 49707
 Phone: 800-942-2957 Fax: 866-942-3297
 E-Mail: wgbicylinders@benjoy.com

